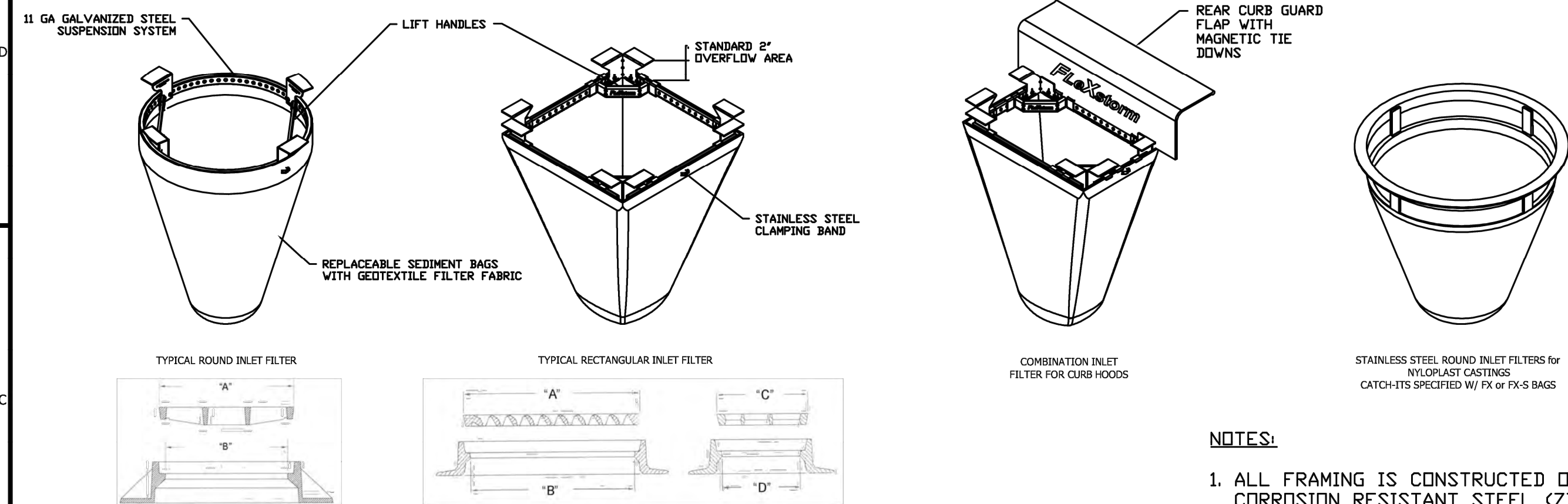


FLEXSTORM CATCH-IT FILTERS FOR TEMPORARY INLET PROTECTION PRODUCT SELECTION AND SPECIFICATION DRAWING



NOTES:

- ALL FRAMING IS CONSTRUCTED OF CORROSION RESISTANT STEEL (ZINC PLATED OR GALVANIZED) FOR 7 YEAR MINIMUM SERVICE LIFE.
- UPON ORDERING CONFIRMATION OF THE DDT CALLOUT, PRECAST OR CASTING MAKE AND MODEL, OR DETAILED DIMENSIONAL FORMS MUST BE PROVIDED TO CONFIGURE AND ASSEMBLE YOUR CUSTOMIZED FLEXSTORM INLET FILTER. PART NUMBER ALONE IS NOT SUFFICIENT.
- FOR WRITTEN SPECIFICATIONS AND MAINTENANCE GUIDELINES VISIT WWW.INLETFILTERS.COM

SPECIFICATIONS FOR STANDARD BAGS BY NOMINAL SIZE			
Nominal Bag Size	Solids Storage (CuFt)	Filtered Flow Rate at 50% Max (CFS)	IL (NonWoven)
Small	1.6	1.2	0.9
Medium	2.1	1.7	1.3
Large	3.8	2.7	1.9
XL	4.2	3.6	2.6

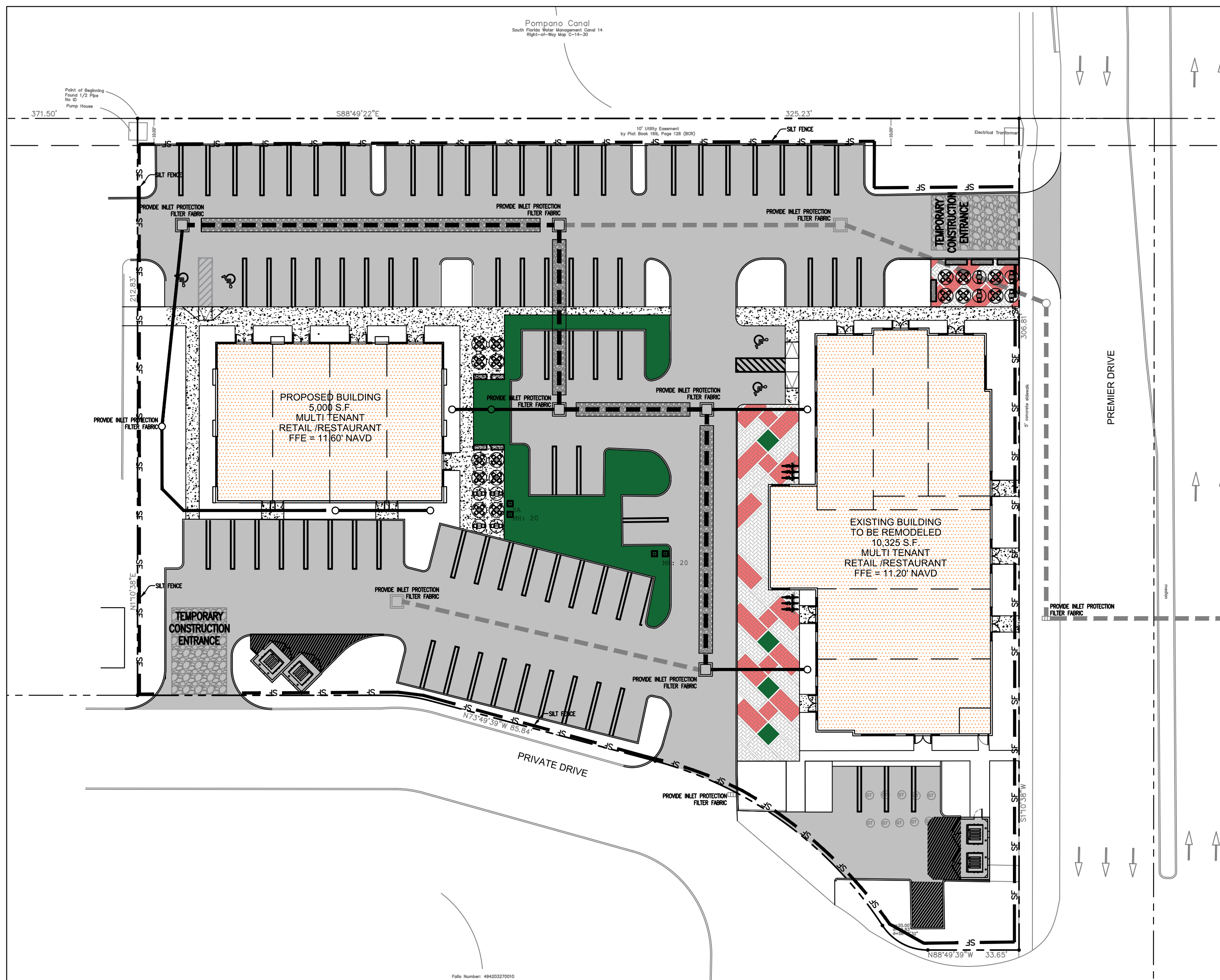
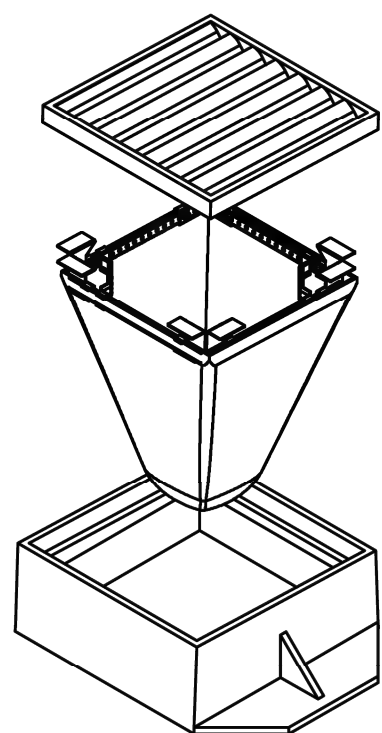
FLEXSTORM
INLET FILTERS.
CATCH IT

ALL PRODUCTS MANUFACTURED BY INLET & PIPE PROTECTION, INC. A DIVISION OF ADS, INC. WWW.INLETFILTERS.COM
(866) 287-8655 PH
(630) 355-3477 FX
INFO@INLETFILTERS.COM

SIZE: C DWG NO: FLEXSTORM_CATCH_IT REV: A
SCALE: SHEET 1 OF 1

INSTALLATION:

- REMOVE GRATE
- DROP FLEXSTORM INLET FILTER ONTO LOAD BEARING LIP OF CASTING OR CONCRETE STRUCTURE
- REPLACE GRATE



Revisions:	
1	DRC COMMENTS 08.10.2023
2	DRC COMMENTS 11.26.2025
3	BACKGROUND UPDATE 02.27.2026

OWNER / DEVELOPER:
RED LINK MANAGEMENT CORP
2750 NE 185TH ST. #304
AVENTURA, FLORIDA 33180

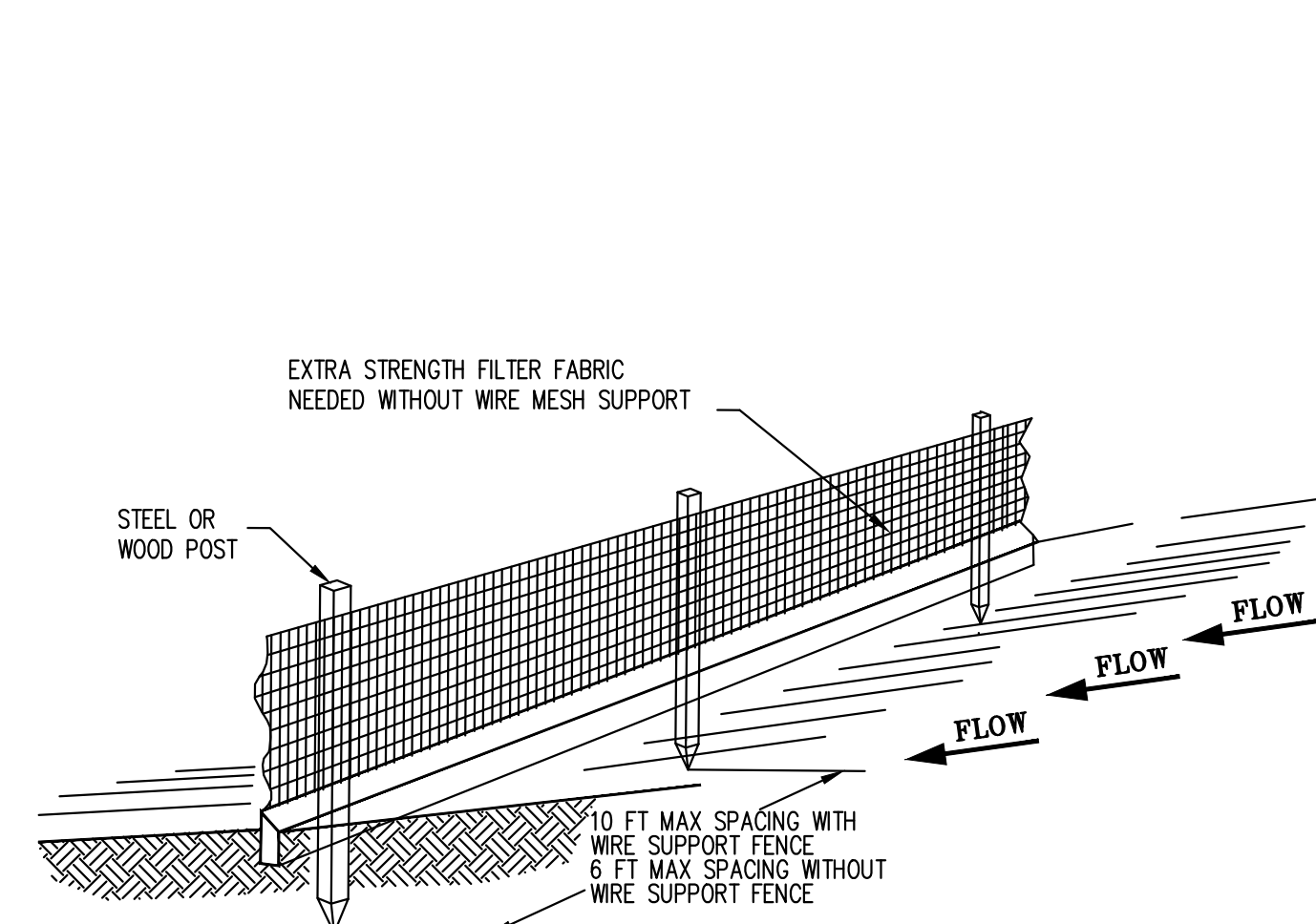
PROJECT:
**FOLIO 4942-03-27-0012
PROPOSED SHELL BLDG @
2100 WEST ATLANTIC BLDG**
2100 W ATLANTIC BLVD
POMPANO BEACH, FLORIDA 33069

Job Number: 24109.01
File name:
Issued Date: 04-23-2025
Drawn by: A.S
Checked by: T.R.

SHEET NAME

SWPPP

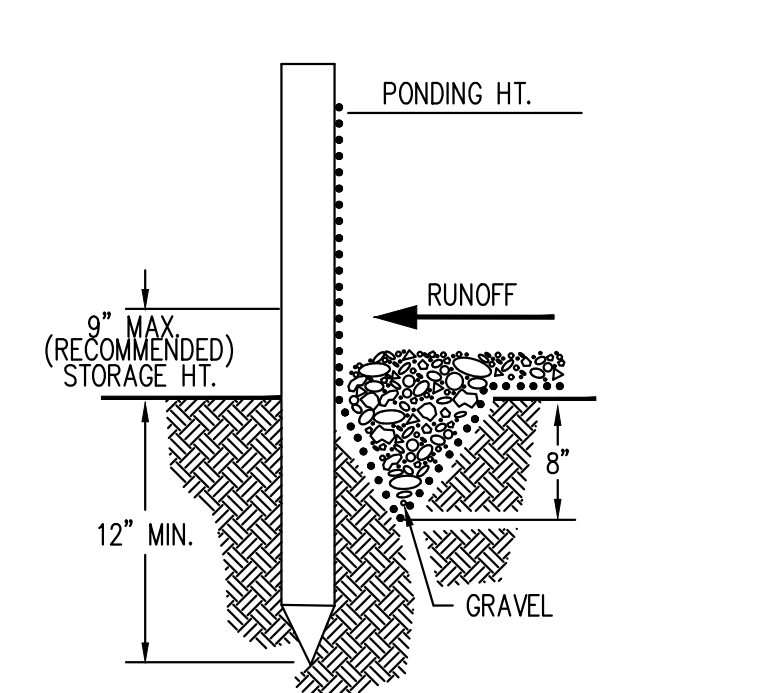
Sunshine811
Call 811 or visit sunshine811.com two full business days before digging to avoid buried facilities located and marked.
Check positive response codes before you dig!



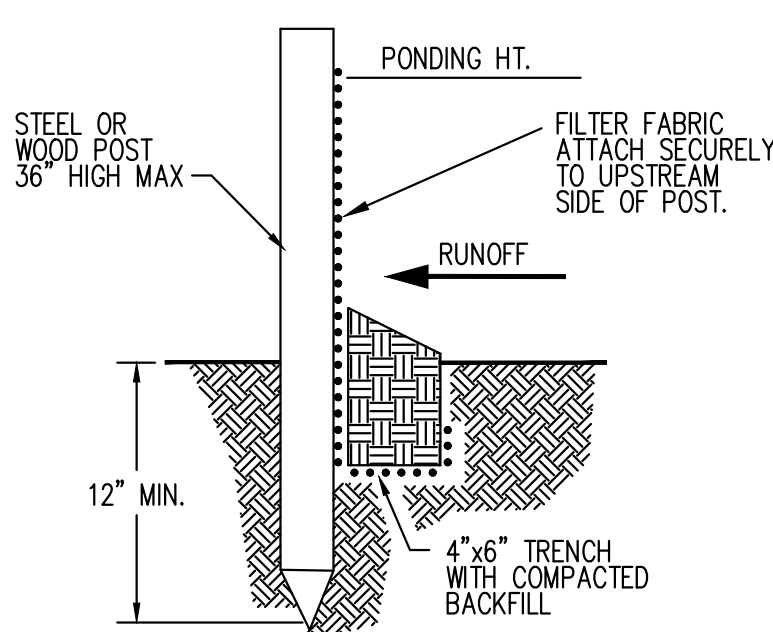
NOTE:

- INSPECT AND REPAIR FENCE AFTER EACH STORM EVENT AND REMOVE SEDIMENT WHEN NECESSARY.
- REMOVED SEDIMENT SHALL BE DEPOSITED TO AN AREA THAT WILL NOT CONTRIBUTE SEDIMENT OFF-SITE AND CAN BE PERMANENTLY STABILIZED.
- SILT FENCE SHALL BE PLACED ON SLOPE CONTOURS TO MAXIMIZE PONDING EFFICIENCY.

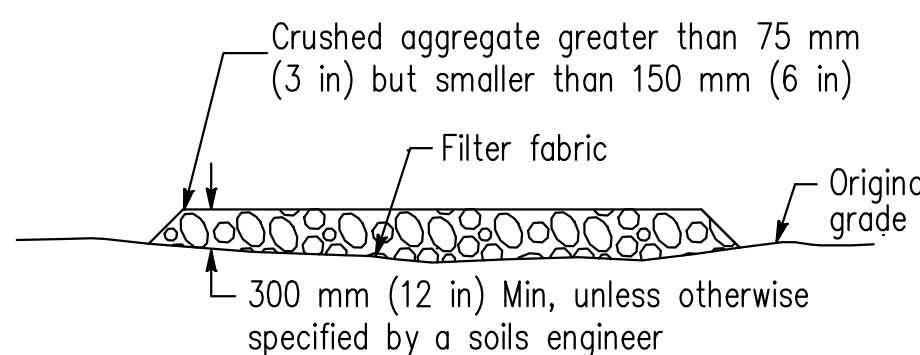
SILT FENCE DETAIL
SCALE: NTS



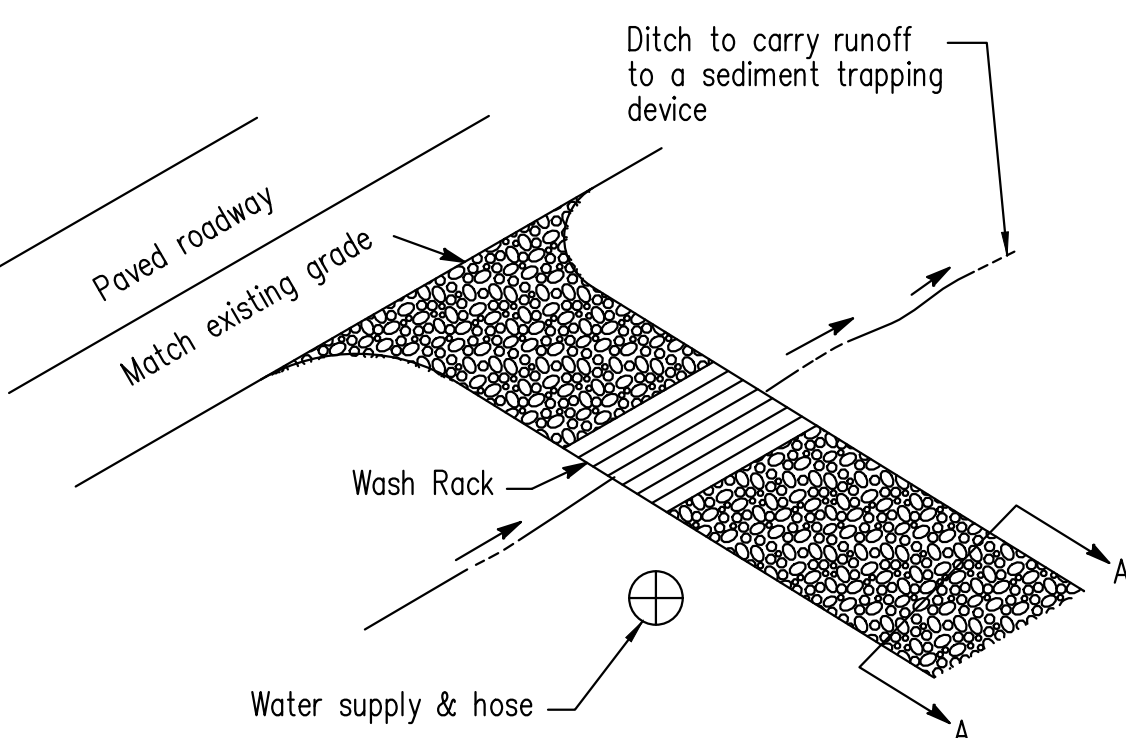
ALTERNATE DETAIL
TRENCH WITH GRAVEL



STANDARD DETAIL
TRENCH WITH NATIVE BACKFILL



SECTION A-A
NTS



TYPICAL TIRE WASH
NOT TO SCALE

STABILIZED CONSTRUCTION ENTRANCE
SCALE: NTS

NOTES:

- ALL EROSION AND SILTATION CONTROL METHODS SHALL BE IMPLEMENTED PRIOR TO THE START OF THE DEMOLITION AND MAINTAINED UNTIL CONSTRUCTION IS COMPLETED.
- IF WIND EROSION BECOMES SIGNIFICANT DURING CONSTRUCTION, THE CONTRACTOR SHALL STABILIZE THE AFFECTED AREA USING SPRINKLING, IRRIGATION OR OTHER ACCEPTABLE METHODS.

SITE LEGEND:

SYMBOL	DESCRIPTION
— SF	PROPOSED SILT FENCE

SEQUENCING:

THE SILT FENCE INSTALLATION SHALL BE SEQUENCED WITH CONSTRUCTION ACTIVITIES. PORTIONS OF THE SILT FENCE MAY BE INSTALLED OR REMOVED AT DIFFERENT TIMES THROUGHOUT THE PROJECT. THE SILT FENCE IS ONLY REQUIRED IF THE ADJACENT GROUND SURFACE HAS BEEN DISTURBED OR IF STORMWATER RUNOFF FROM OTHER AREAS OF WORK ARE FLOWING THROUGH THE INTENDED SECTION OF SILT FENCE. PORTIONS OF THE SILT FENCE MAY BE OPENED FOR PEDESTRIAN ACCESS TO OPERATING BUSINESSES AS NECESSARY AS LONG AS THE SILT FENCE IS IN PLACE WHEN CONSTRUCTION ACTIVITIES IN THE AREA ARE COMMENCED.

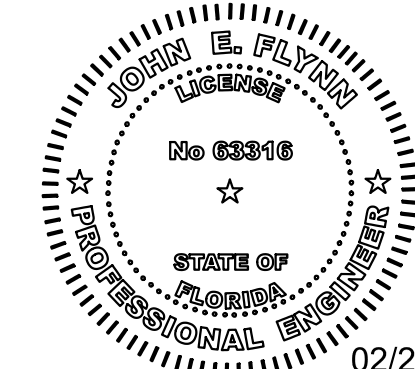
ALL INLET FILTERS SHALL REMAIN IN PLACE FOR THE DURATION OF CONSTRUCTION.

This item has been digitally signed and sealed by John E. Flynn, P.E. on the date adjacent to the seal.

Printed copies of this document are not considered signed and sealed and the signature must be verified on any electronic copies.

GRACE ENGINEERING
Civil Engineering Consultants

17110 SW 64th Court
Southwest Ranches, Florida 33331
GraceEngineeringLLC@gmail.com
754.200.4534



02/27/2026
JOHN E. FLYNN, P.E.
Florida License No. 63316
GRACE ENGINEERING, LLC
Certificate of Authorization No. 29280

**GRADE ELEVATIONS
ARE IN NAVD88 DATUM**

GRAPHIC SCALE IN FEET
SCALE 1" = 30'
24 x 36 SHEET

Sunshine811
Call 811 or visit sunshine811.com two full business days before digging to avoid buried facilities located and marked.
Check positive response codes before you dig!

PZB
Call 811 or visit sunshine811.com two full business days before digging to avoid buried facilities located and marked.
Check positive response codes before you dig!

SHEET NUMBER
C-4